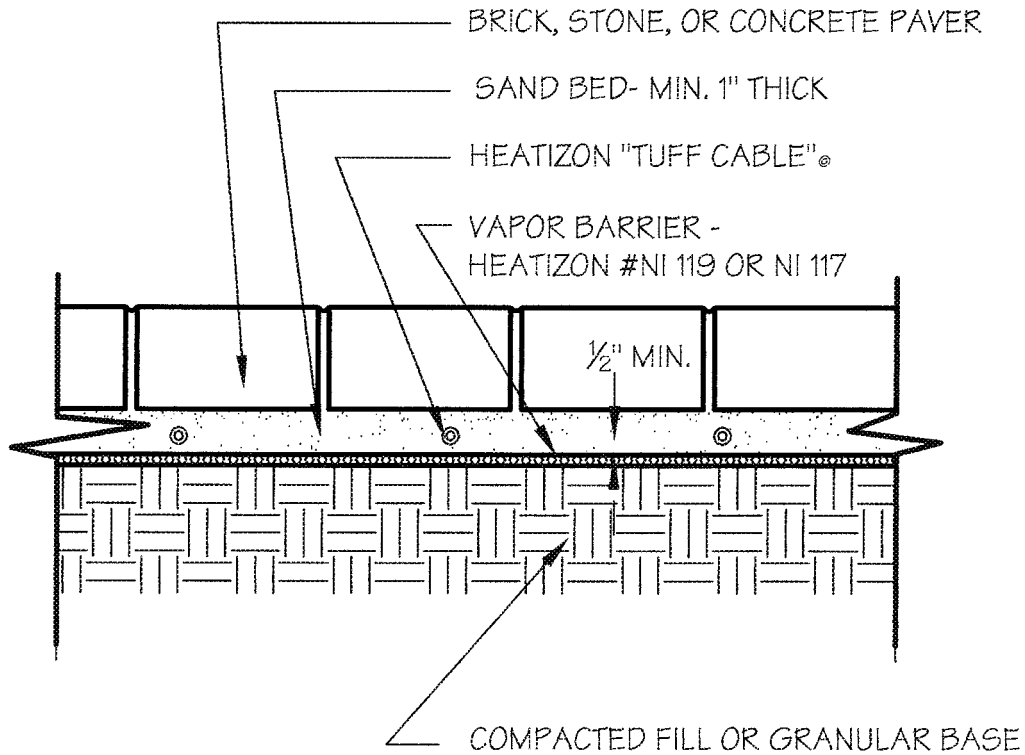


**WARNING!!**  
DO NOT CUT OR DAMAGE  
HEATIZON "TUFF CABLE" OR  
ITS INSULATOR IN ANY WAY

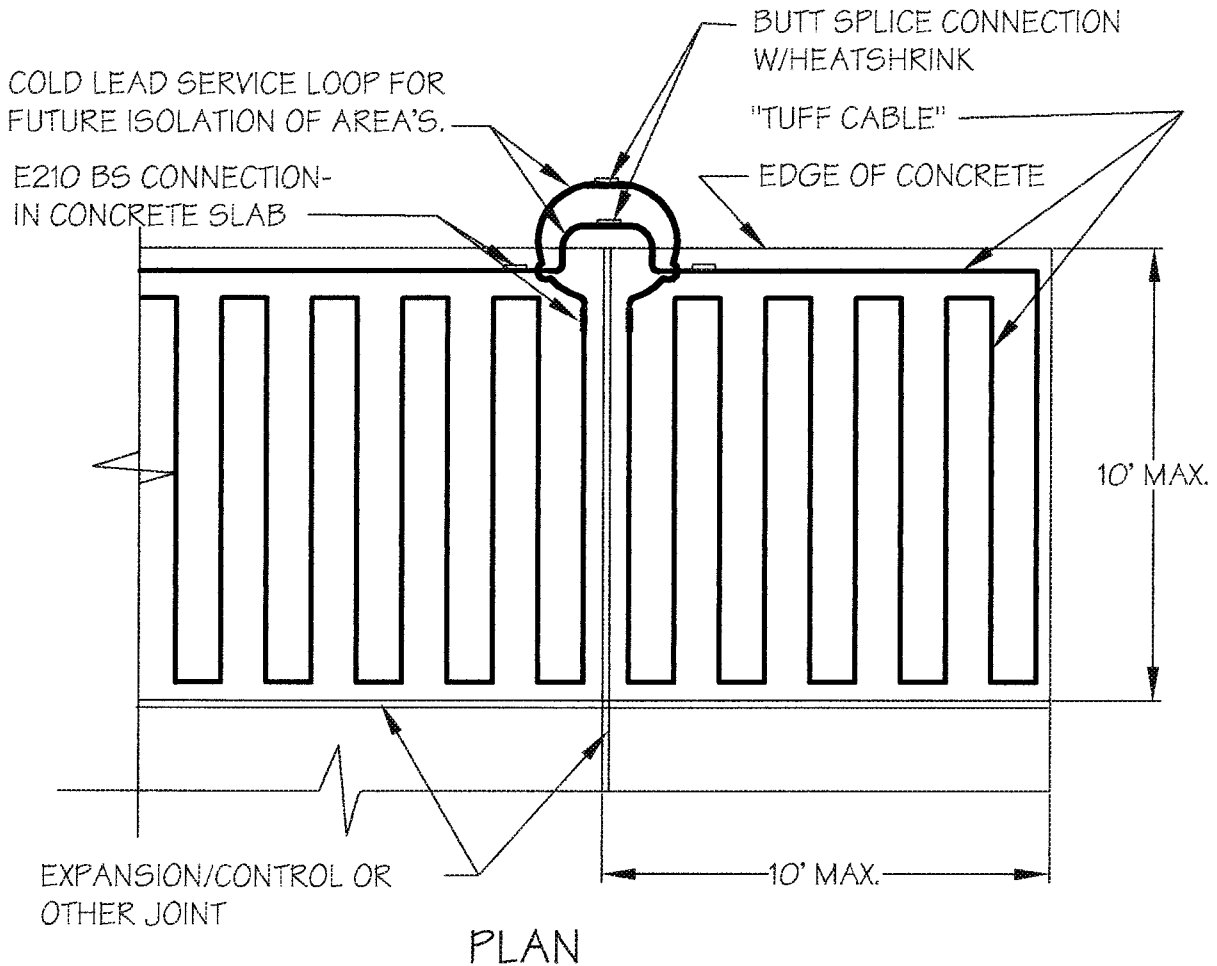


DRAWING NO.: <b>SM-3</b>	<b>TUFF CABLE IN SAND BED UNDER BRICK, STONE OR CONCRETE PAVERS</b>	DRAWING NO.: JNL
		DATE: FEB. 2003

**HEATIZON SYSTEMS**  
*advanced floor heating/ snowand ice removal systems*

4403 SOUTH 500 WEST, MURRAY, UTAH 84123 PH (801) 293-1232 FAX (801) 293-3077

**WARNING!!**  
 DO NOT CUT OR DAMAGE  
 HEATIZON "TUFF CABLE" OR  
 IT'S INSULATOR IN ANY WAY



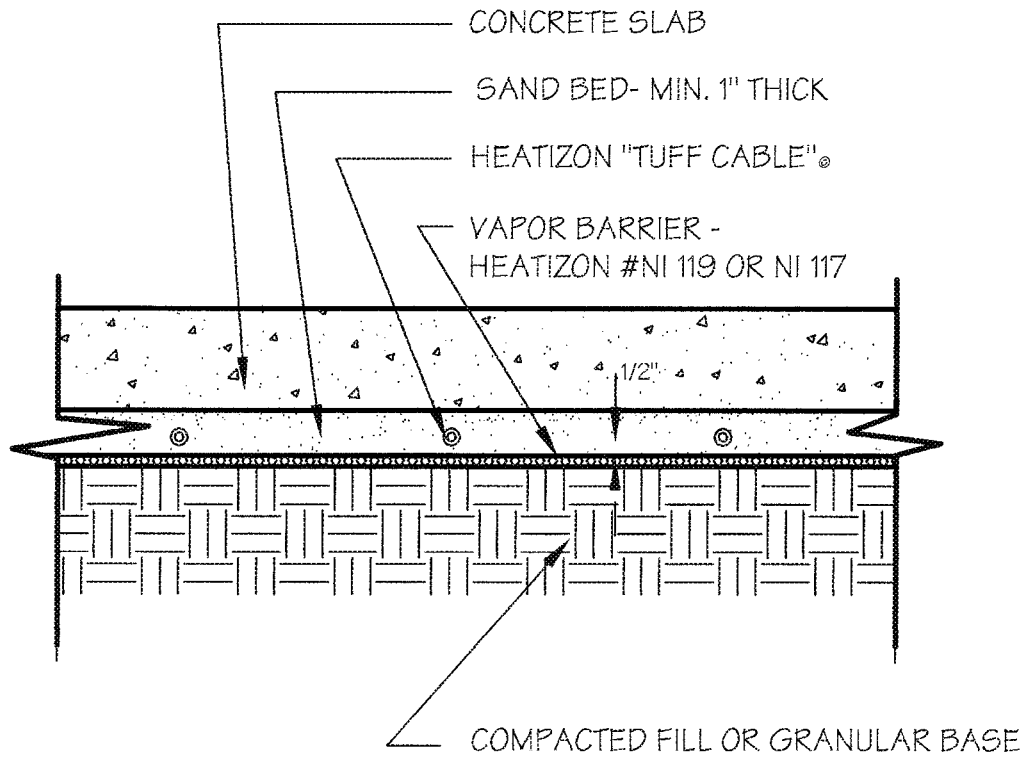
**NOTE:**  
 "TUFF CABLE" SHALL NOT EXTEND  
 THROUGH EXPANSION, CONTROL,  
 OR OTHER JOINTS. "JUMPER" TO BE  
 USED AT ALL JOINTS.

DRAWING NO.: <b>SM-4M</b>	<b>TUFF CABLE IN CONCRETE &amp; SERVICE LOOP</b>	DRAWING NO.: JNL DATE: FEB. 2003
------------------------------	--	---

**HEATIZON SYSTEMS**  
*advanced floor heating/ snowand ice removal systems*

4403 SOUTH 500 WEST, MURRAY, UTAH 84123 PH (801) 293-1232 FAX (801) 293-3077

**WARNING!!**  
DO NOT CUT OR DAMAGE  
HEATIZON "TUFF CABLE" OR  
ITS INSULATOR IN ANY WAY



DRAWING NO.:

**SM-5**

**TUFF CABLE IN SAND BED UNDER  
CONCRETE SLAB**

DRAWING NO.:

JNL

DATE:

FEB. 2003

**HEATIZON SYSTEMS**

*advanced floor heating/ snow and ice removal systems*

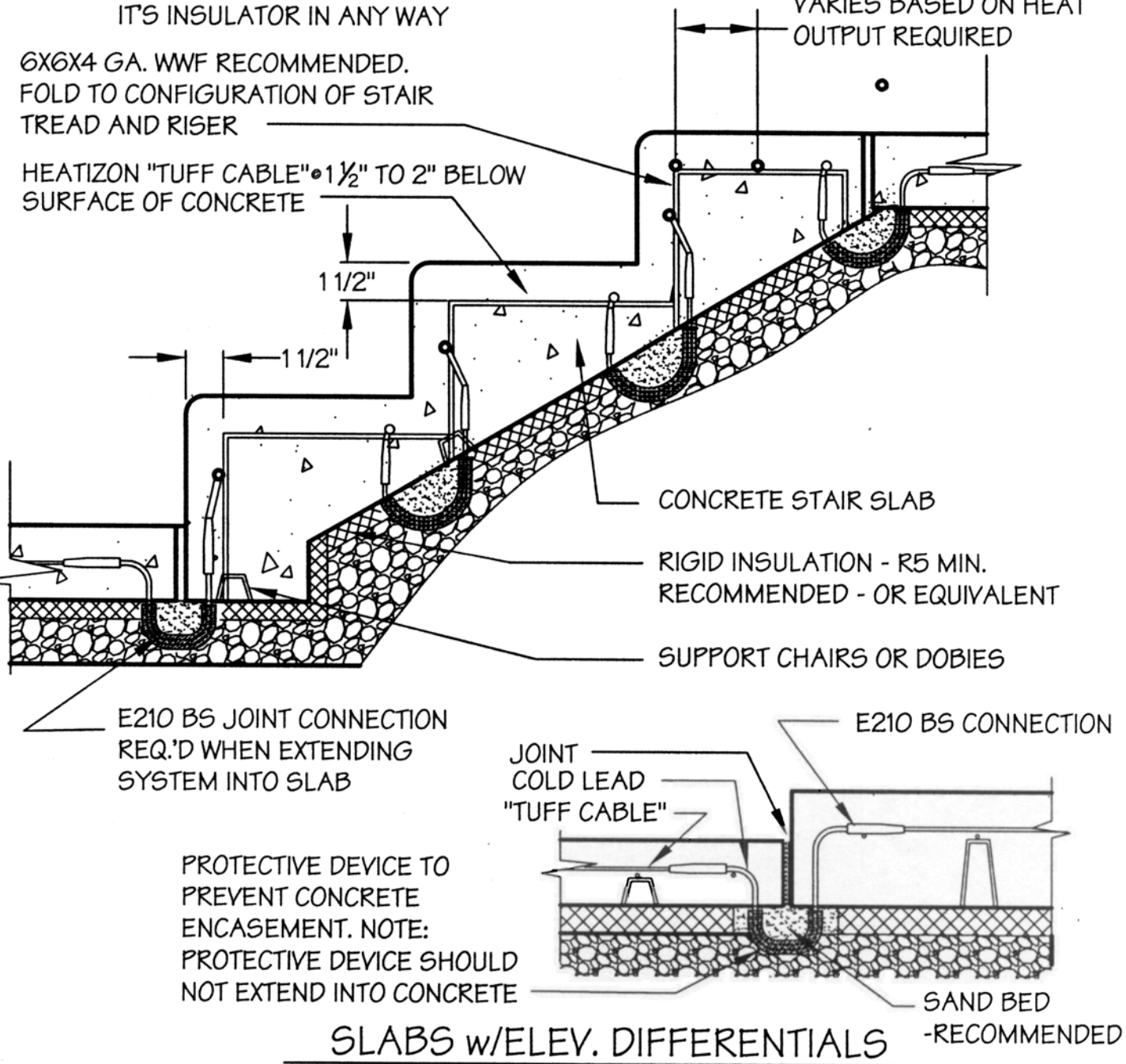
4403 SOUTH 500 WEST, MURRAY, UTAH 84123 PH (801) 293-1232 FAX (801) 293-3077

**WARNING!!**  
DO NOT CUT OR DAMAGE  
HEATIZON "TUFF CABLE" OR  
ITS INSULATOR IN ANY WAY

6X6X4 GA. WWF RECOMMENDED.  
FOLD TO CONFIGURATION OF STAIR  
TREAD AND RISER

HEATIZON "TUFF CABLE" • 1 1/2" TO 2" BELOW  
SURFACE OF CONCRETE

SPACING OF TUFF CABLE  
VARIES BASED ON HEAT  
OUTPUT REQUIRED



DRAWING NO.:

**SM-6**

**TUFF CABLE IN CONCRETE  
STAIR SLAB & SLABS w/ ELEVATION  
DIFFERENTIALS**

DRAWN BY:

JNL

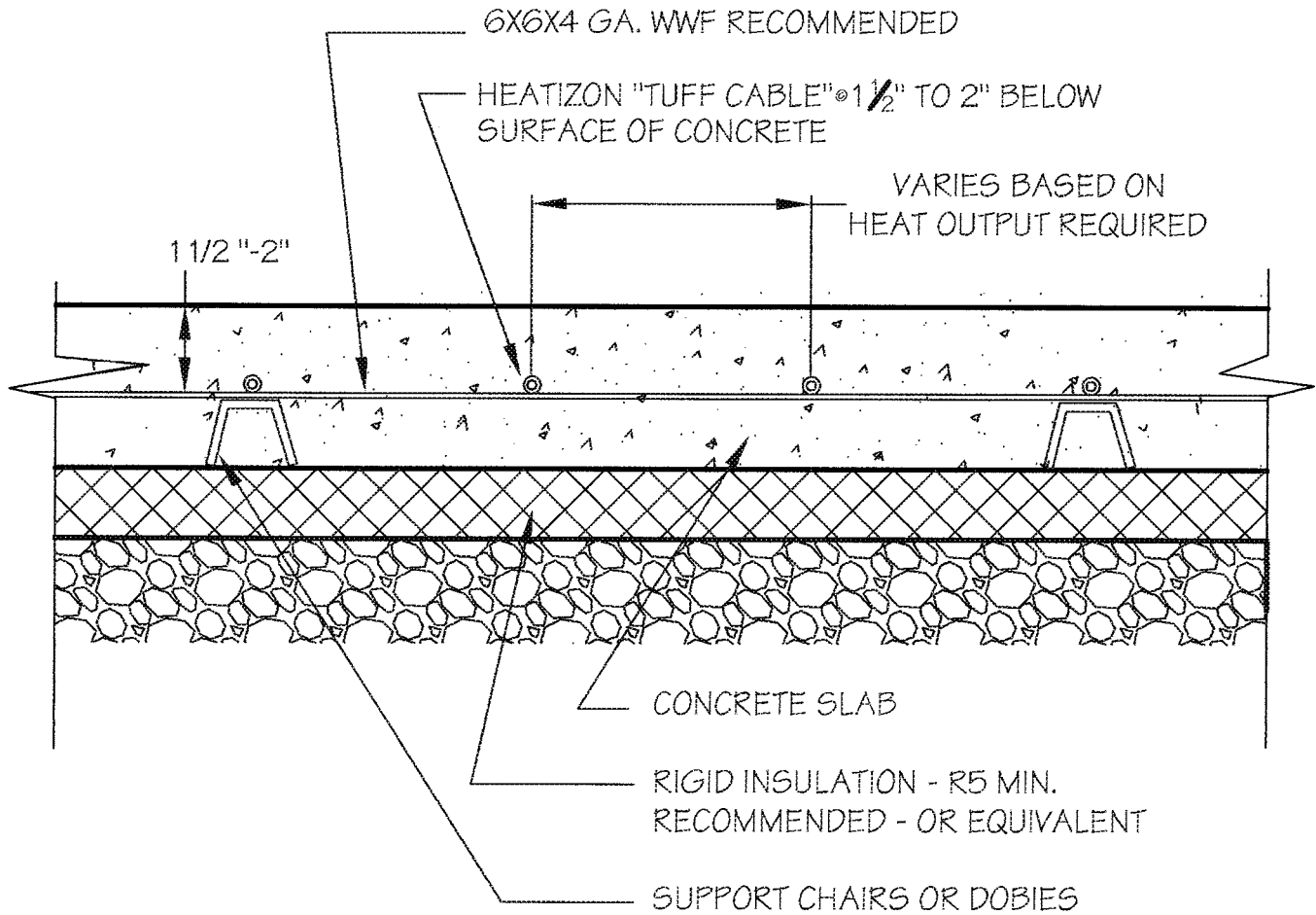
DATE:

MAR. 2004

**HEATIZON SYSTEMS**

*advanced floor heating/ snow and ice removal systems*

4403 SOUTH 500 WEST, MURRAY, UTAH 84123 PH (801) 293-1232 FAX (801) 293-3077



**WARNING!!**  
 DO NOT CUT OR DAMAGE  
 HEATIZON "TUFF CABLE" OR  
 ITS INSULATOR IN ANY WAY

DRAWING NO.:

**FH-9**

**TUFF CABLE IN CONCRETE**

DRAWING NO.:

JNL

DATE:

JAN. 2003

**HEATIZON SYSTEMS**

*advanced floor heating/ snow and ice removal systems*

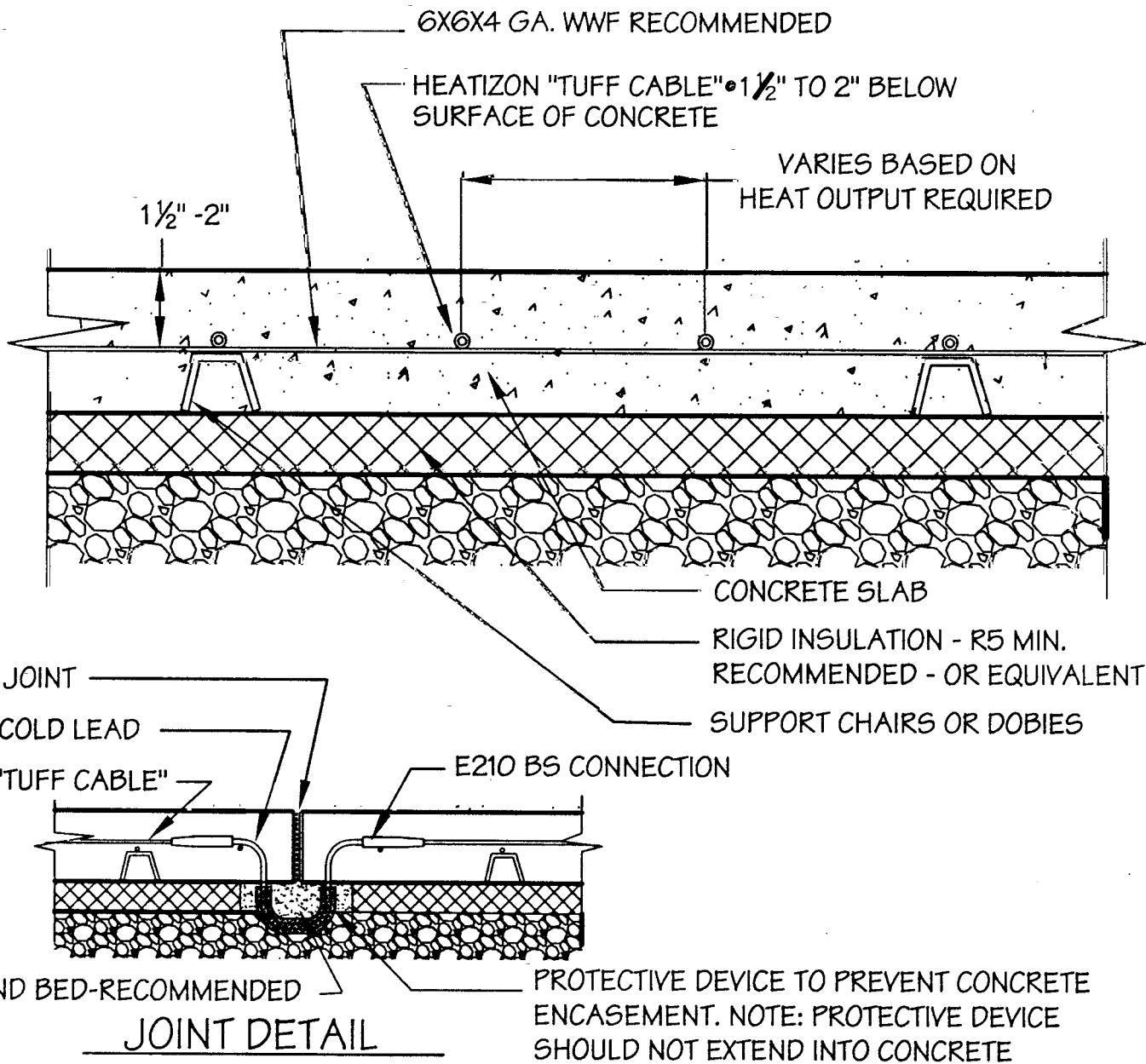
4403 SOUTH 500 WEST, MURRAY, UTAH 84123 PH (801) 293-1232 FAX (801) 293-3077

**WARNING!!**

DO NOT CUT OR DAMAGE  
HEATIZON "TUFF CABLE" OR  
ITS INSULATOR IN ANY WAY

**NOTE:**

"TUFF CABLE" SHALL NOT EXTEND  
THROUGH EXPANSION, CONTROL OR  
ANY OTHER JOINTS. "JUMPER" TO  
BE USED AT ALL JOINTS.



DRAWING NO.:  
**FH-9M**

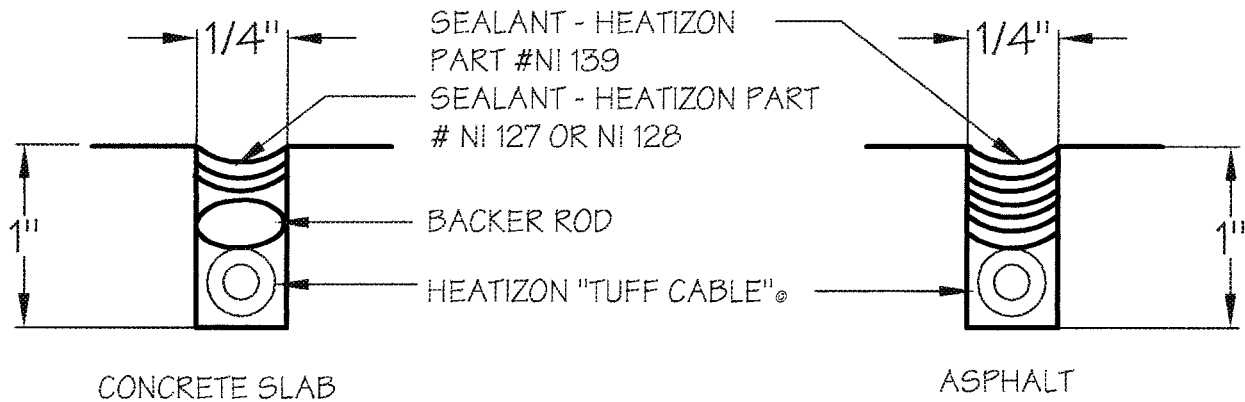
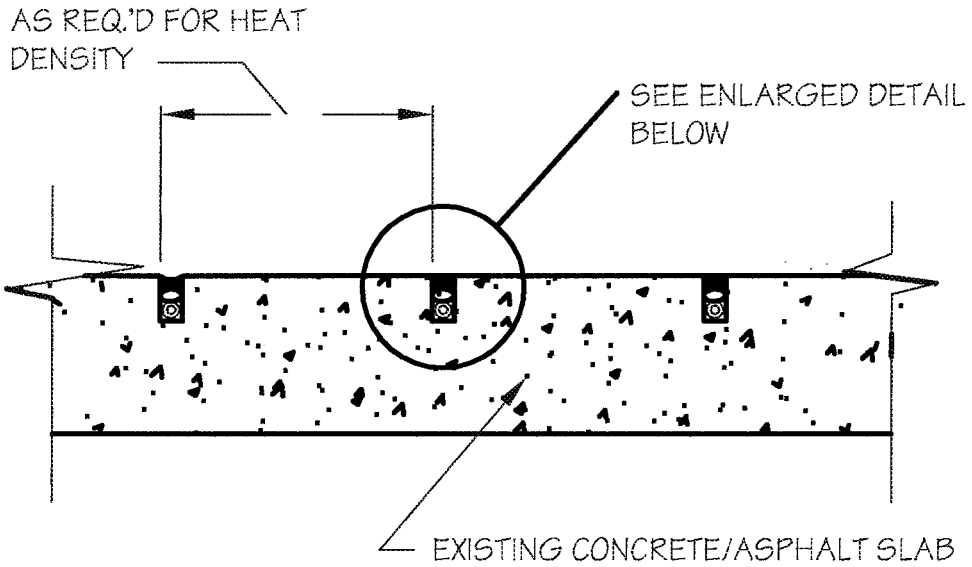
**TUFF CABLE IN CONCRETE  
& JOINT DETAIL**

DRAWN BY:  
JNL  
DATE:  
MAR. 2004

**HEATIZON SYSTEMS**  
*advanced floor heating/ snowand ice removal systems*

4403 SOUTH 500 WEST, MURRAY, UTAH 84123 PH (801) 293-1232 FAX (801) 293-3077

**WARNING!!**  
 DO NOT CUT OR DAMAGE  
 HEATIZON "TUFF CABLE" OR  
 ITS INSULATOR IN ANY WAY



DRAWING NO.: <b>FH-13</b>	<b>TUFF CABLE RETROFIT IN CONCRETE OR ASPHALT</b>	DRAWING NO.: JNL
		DATE: FEB. 2003

**HEATIZON SYSTEMS**  
*advanced floor heating/ snow and ice removal systems*

4403 SOUTH 500 WEST, MURRAY, UTAH 84123 PH (801) 293-1232 FAX (801) 293-3077